

HERDC & BLOCK FUNDING

A VIP-RESEARCH REPORT

The Visual Information Portal – Research (VIP-R) provides a diverse array of national and international data via a cloud based visual charting system which can be accessed at your desk or on the move using your computer, laptop, tablet or even mobile phone.

This report provides a small sample of the analyses available to understand the recently released HERDC data. The charts in this report allow for comparison and analysis related to:

- HERDC 2013 data
- Block Funding for 2015
- Top 'movers' over the last 3 years based on targeted/selected organisations and disciplines

Prepared for the Australian
University Research Sector

By Intuitive Innovations Pty Ltd

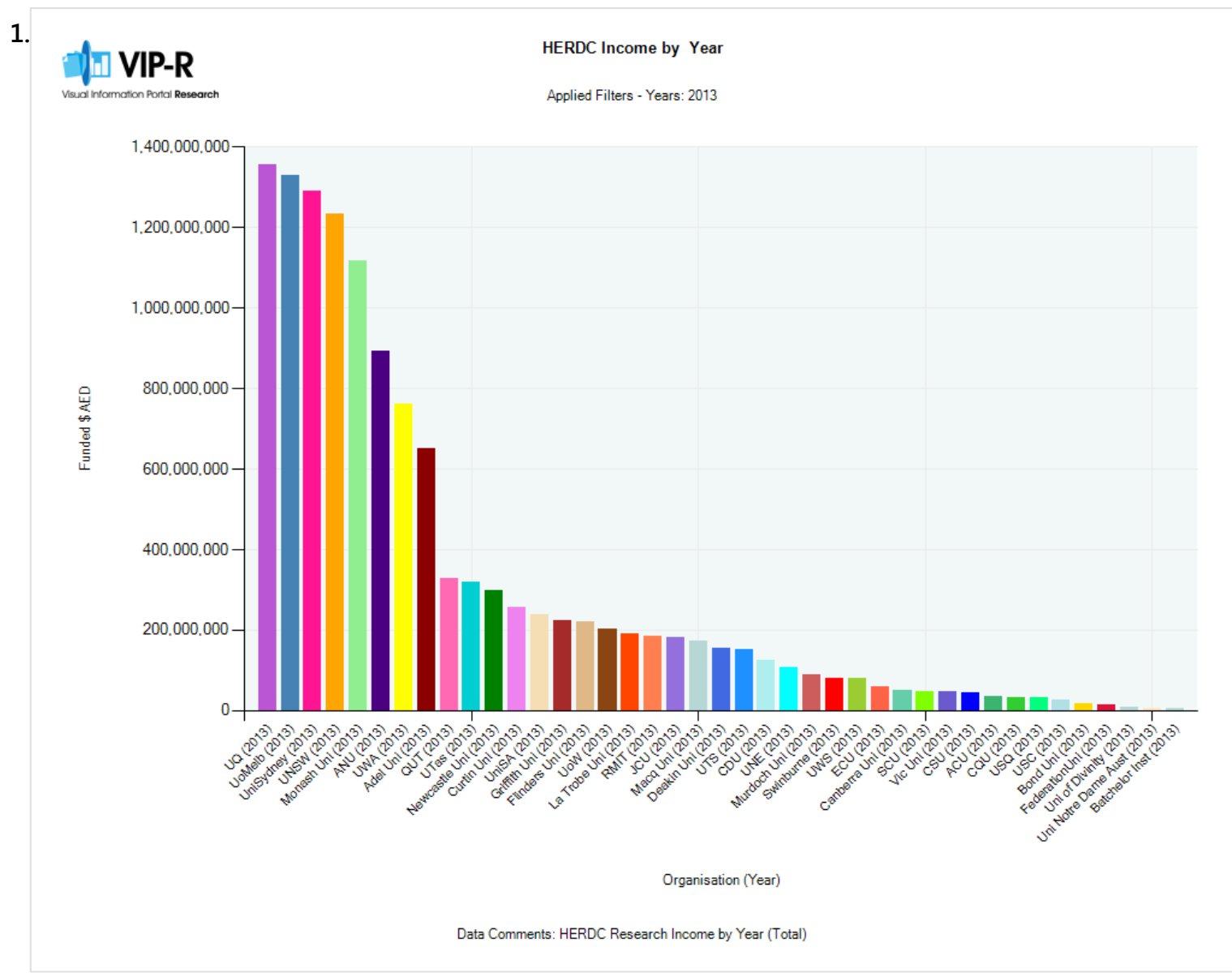
February 2015

CONTENTS

HERDC INCOME DATA	1
BLOCK GRANT DATA.....	12
VIP-R INFORMATION	
HERDC/BLOCK FUNDING REPORT (DETAILED)	16
VIP-R REPORTS & SYSTEM.....	17
DATA SOURCES	19
SUMMARY OF PURCHASE OPTIONS....	20

HERDC Income Data

1. HERDC All Income per University for 2013

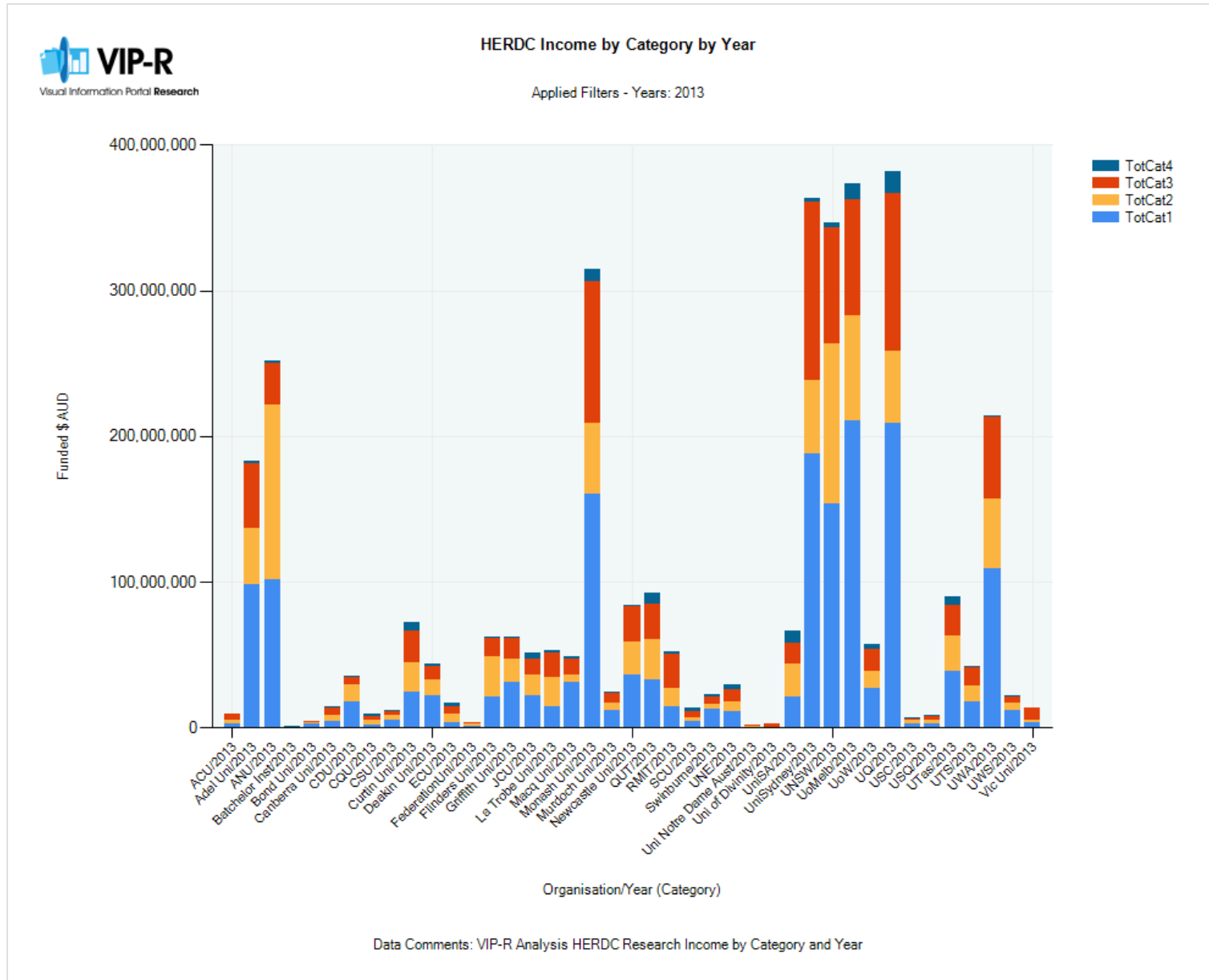


To demonstrate the total income awarded to each Australian University, it is possible to view both the total overall HERDC income as well as the breakdown per income category for each individual university for the year 2013.

The data in this analysis is ordered from highest dollar amount to lowest – left to right.

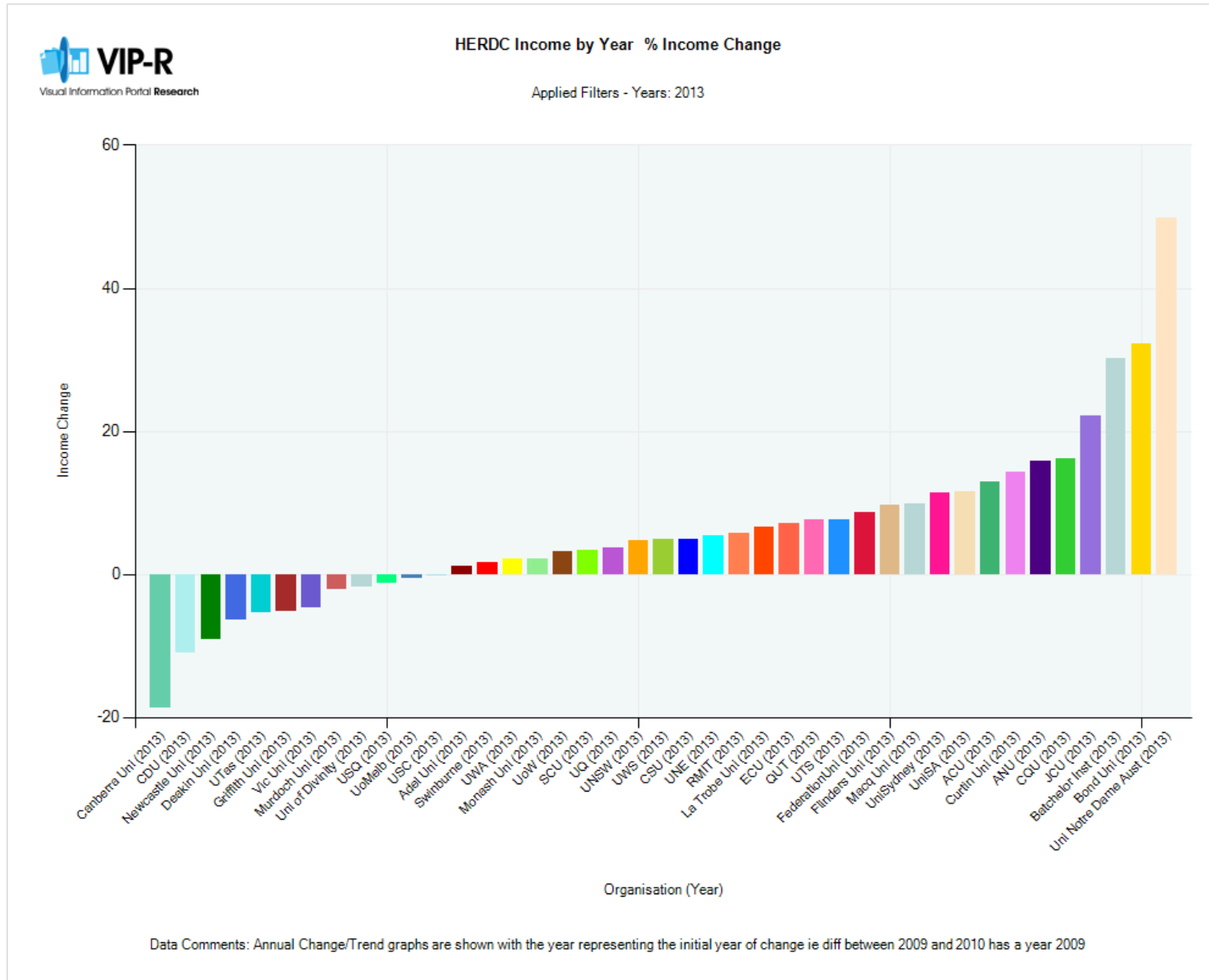


2. HERDC Income –Income per Categories 1 – 4 for 2013



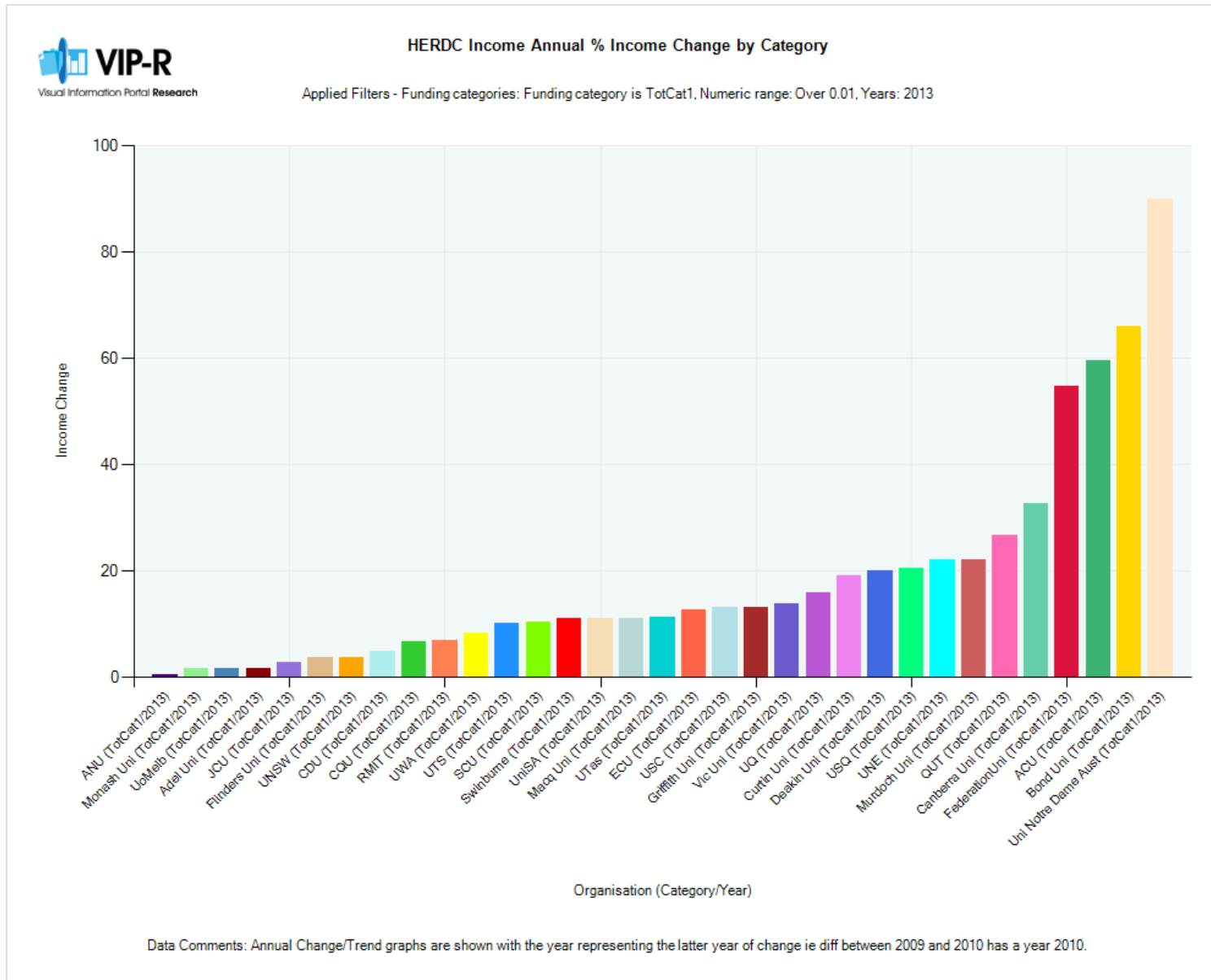
This analysis shows the breakdown of HERDC funding per income category awarded to each individual university for the year 2013.

3. HERDC Income – All Universities Percentage Income Change



This analysis shows the percentage increase or decrease in total income for HERDC income from 2012 to 2013 for all universities.

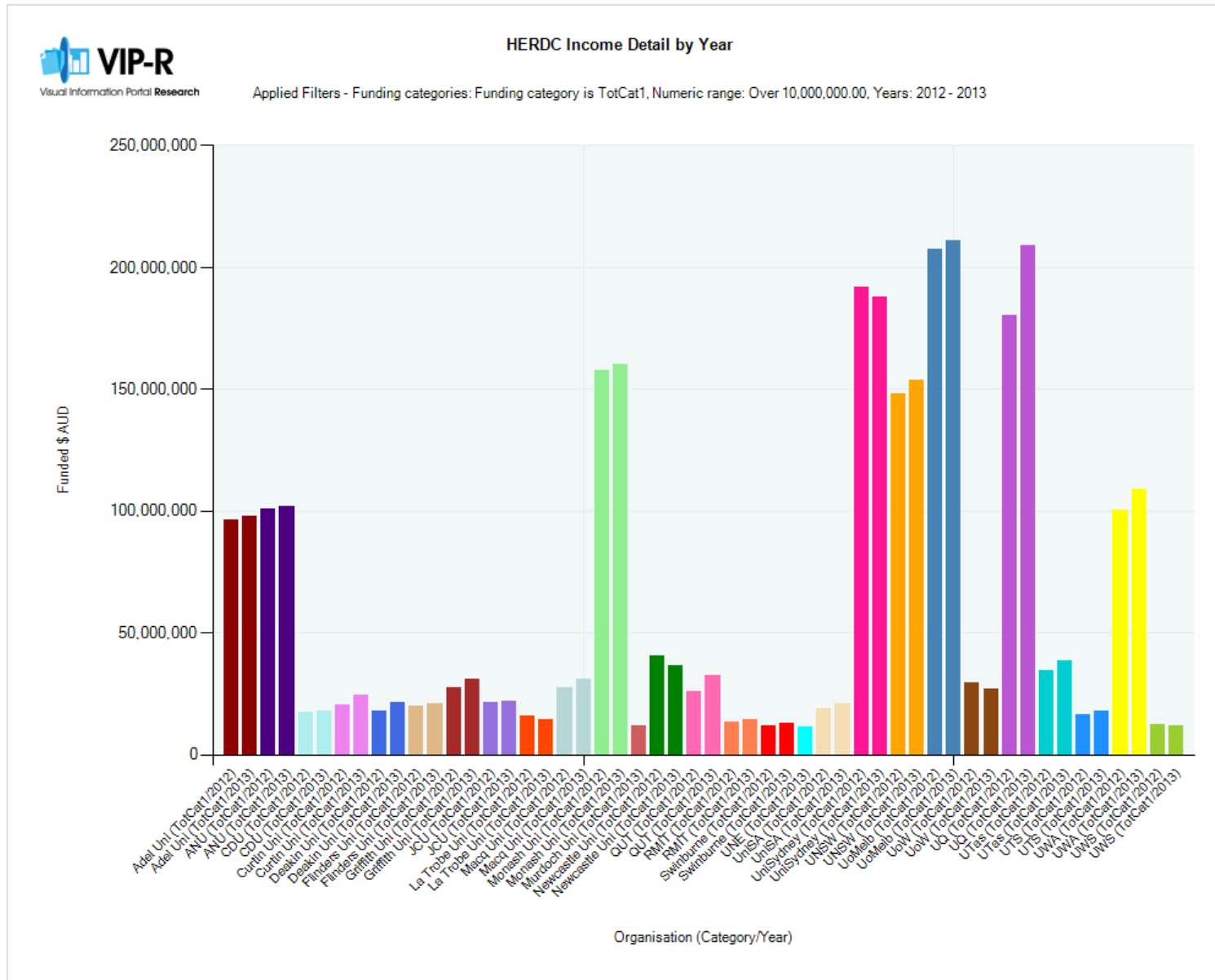
4. HERDC Income – Top Movers in Category 1 Income



To understand those institutions that have been the greatest 'movers' in terms of increase in percentage of HERDC income received, it is possible to look at the percentage change in HERDC income over multiple years.

This analysis shows those universities who have increased their income in 2013 in Category 1 HERDC funds. It is important to note that this does not correlate to the largest income earners for HERDC but rather this specific analysis shows those universities who have had the biggest increase in Cat 1 income in 2013 compared with their last year of HERDC Cat 1 income.

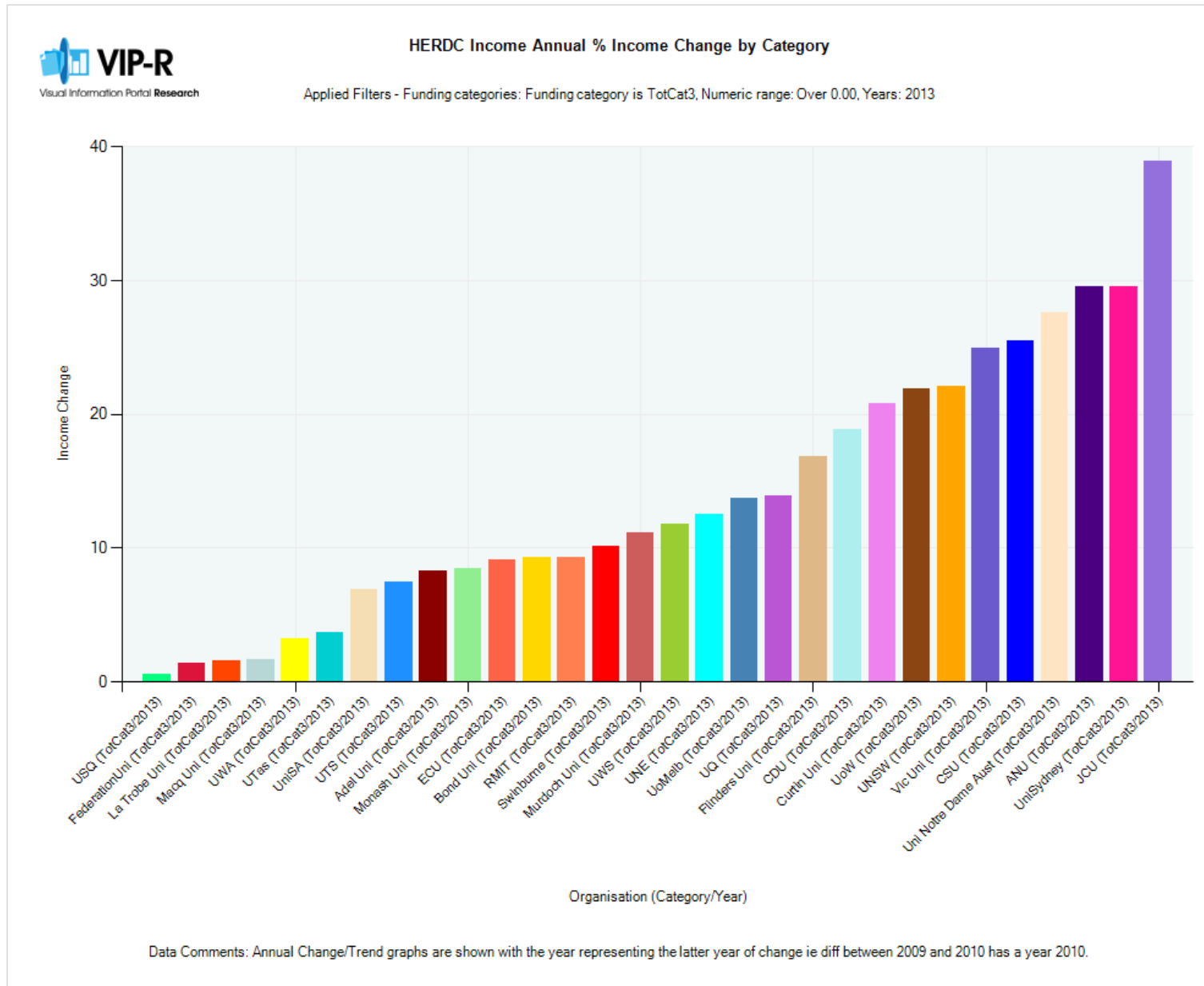
5. HERDC Income – Universities awarded greater than \$10M in 2013 for HERDC Category 1 Funding



This analysis shows those universities with the highest awarded Category 1 income (over \$10 million) in 2012 and their income in 2013.

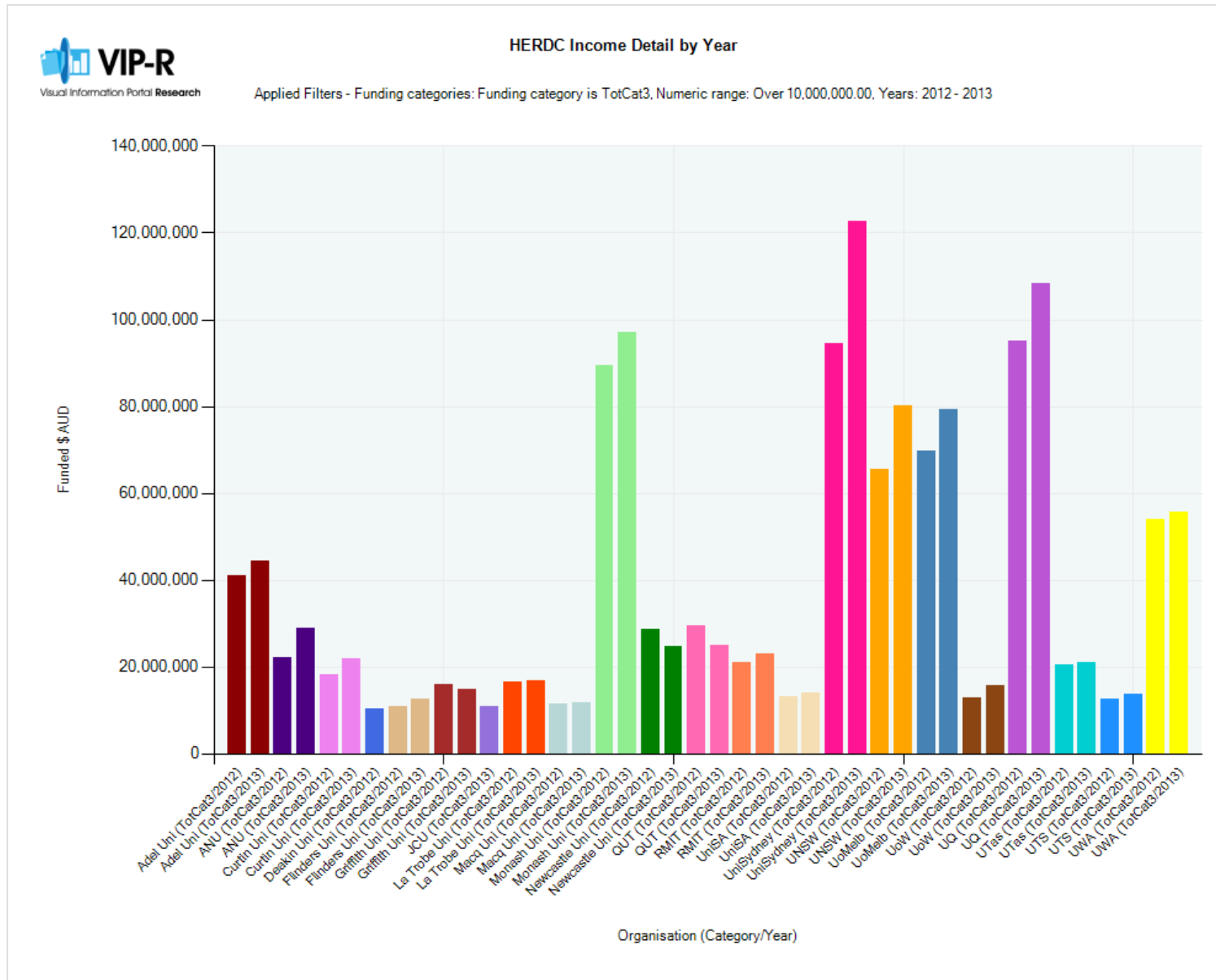
The data in this analysis can be compared against the data in chart 3 above to see those universities who have been the highest income earners in 2012/13 and have also had the largest increase in 2013. The universities who are in the top 10 percentage increases for 2013 and also received over \$10M in funding were QUT, Murdoch, UNE and Deakin.

6. HERDC Income – Increases in Category 3 Income in 2013



This analysis shows those universities who have increased their income in 2013 in Category 3 HERDC funds. The increase for 2013 is calculated on the difference in income between 2013 and the most previous year of Category 3 income for the university.

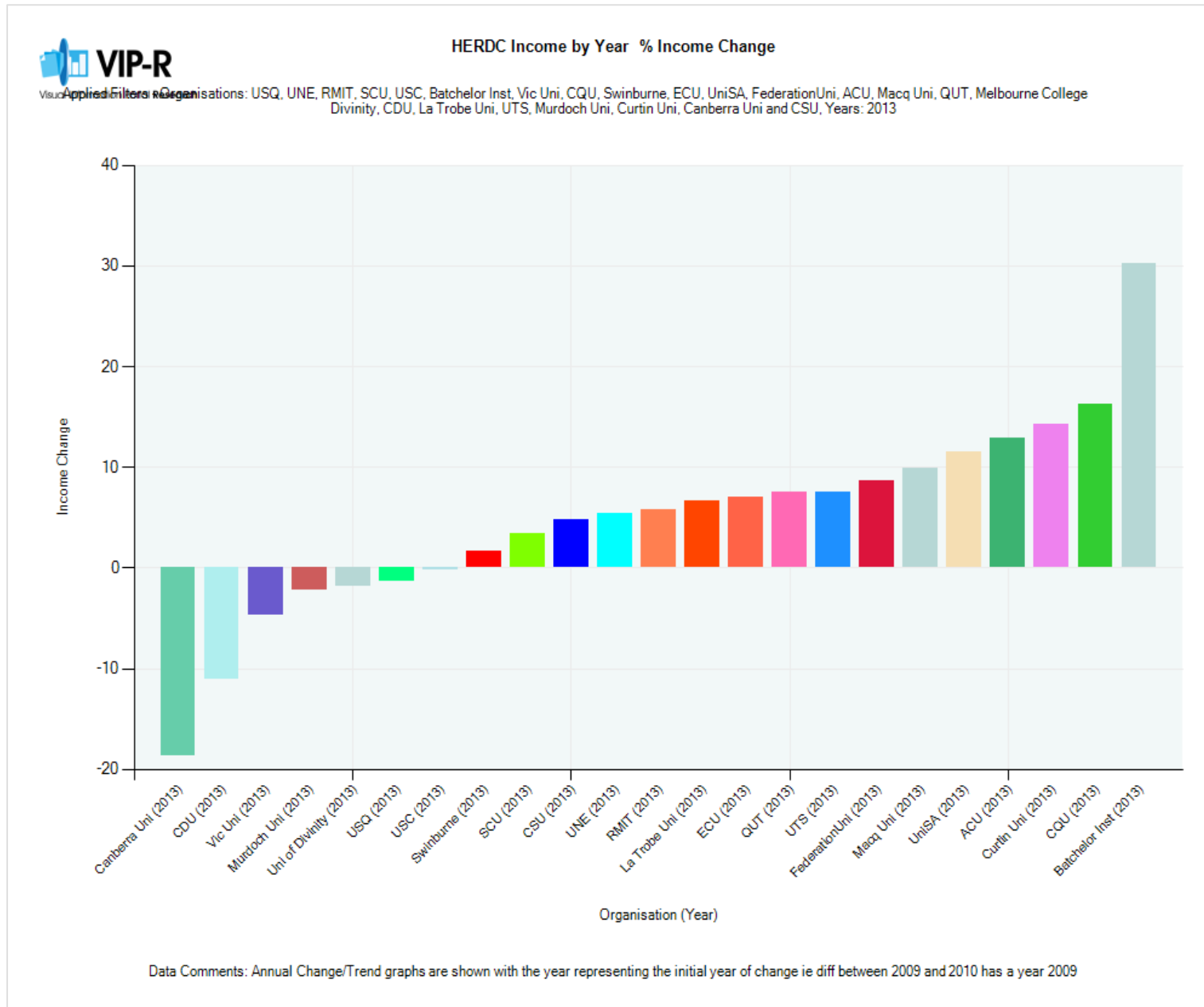
7. HERDC Income – Universities awarded greater than \$10M in 2013 for HERDC Category 3 Funding



This analysis shows those universities with the highest awarded Category 3 income (over \$10 million) in 2012 and their income in 2013.

The data in this analysis can be compared against the data in chart 5 above to see those universities who have been the highest income earners in 2012/13 and have also had the largest increase in 2013. The universities who are in the top 10 percentage increases and also received over \$10M in Cat 3 income are JCU, UniSyd, ANU, UNSW, UoW and Curtin.

8. HERDC Income – Growth Trends for Universities Who Do Not Have a Medical School



This analysis shows the change in income in 2013 for universities without a medical school. The figures in the chart include total HERDC income (summed for categories 1 through 4) with the calculation based on the difference in income from 2012 to 2013.

The table includes supporting data for the percentage change per year. Also included is a 3 year moving average for years 2011 to 2013 and a forecast income figure for 2015. The moving average is calculated on the most recent 3 years of income data and the forecast based on the calculated averages, assuming that the 3 year growth rate remains constant.

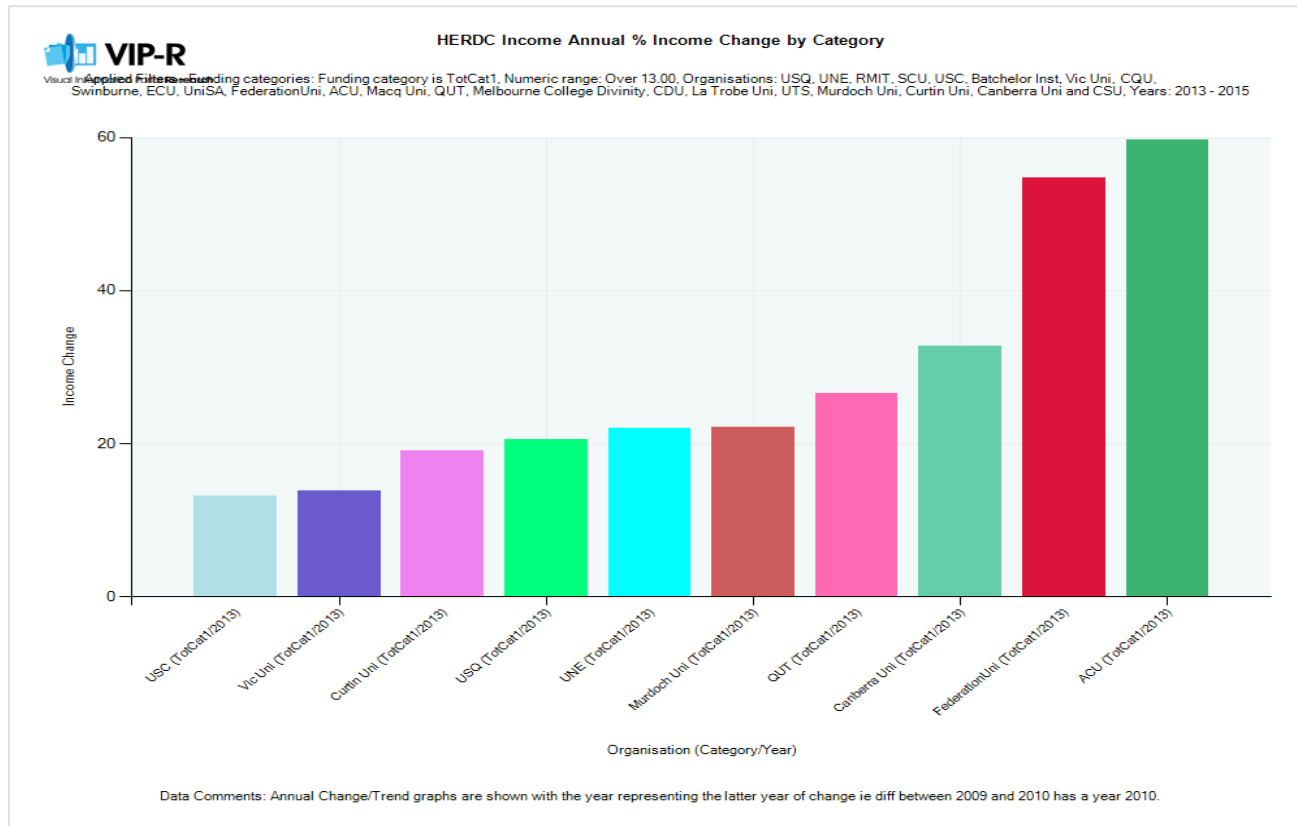
9. HERDC Income – Growth Trends for Universities Who Do Not Have a Medical School (cont.)

University	2011 % Chg	2012 % Chg	2013 % Chg	3 yr average Cat 3 Income (2011-2013)	Forecast income (2015)
QUT	12.87	13.33	7.56	\$ 84,864,664	\$ 100,978,072
Curtin Uni	6.83	1.46	14.26	\$ 66,088,660	\$ 77,138,856
UniSA	2.99	-4.35	11.49	\$ 63,002,196	\$ 68,685,128
RMIT	31.15	-0.57	5.74	\$ 50,293,836	\$ 56,079,772
La Trobe Uni	2.66	16.54	6.66	\$ 48,666,880	\$ 57,389,184
Macq Uni	30.06	-1.77	9.86	\$ 45,997,932	\$ 52,664,412
CDU	32.43	-10.31	-10.99	\$ 39,455,888	\$ 34,566,836
UTS	15.62	9.12	7.57	\$ 39,230,124	\$ 45,894,700
Murdoch Uni	-19.58	-10.48	-2.14	\$ 26,093,390	\$ 21,666,394
UNE	-9.39	53.68	5.38	\$ 25,547,280	\$ 33,598,904
Swinburne	-6.72	13.05	1.70	\$ 21,434,578	\$ 23,259,688
Canberra Uni	5.99	0.73	-18.67	\$ 16,139,955	\$ 13,136,985
ECU	2.88	-2.07	7.04	\$ 15,898,716	\$ 16,910,310
SCU	27.99	-2.30	3.43	\$ 13,305,800	\$ 14,310,496
Vic Uni	12.54	16.82	-4.70	\$ 13,131,444	\$ 14,215,717
CSU	-23.52	0.50	4.83	\$ 11,807,323	\$ 11,507,060
ACU	13.90	11.32	12.94	\$ 8,487,611	\$ 10,456,813
CQU	17.27	11.38	16.20	\$ 8,053,782	\$ 10,218,989
USQ	15.51	8.96	-1.28	\$ 8,505,261	\$ 9,178,033
USC	-22.95	134.91	-0.18	\$ 5,681,902	\$ 8,279,507
FederationUni	0.14	-2.40	8.65	\$ 3,557,905	\$ 3,807,519
Uni of Divinity	10.78	17.65	-1.80	\$ 2,400,103	\$ 2,675,625
Batchelor Inst	88.76	0.79	30.17	\$ 891,933	\$ 1,248,834

The table includes supporting data to the chart shown in the previous page. Included in the table are the actual figures for the percentage change per year for 2011 to 2013. Also included is a 3 year moving average for years 2011 to 2013 and a forecast income figure for 2015.

The moving average is calculated on the most recent 3 years of income data and the forecast based on the calculated averages, assuming that the 3 year growth rate remains constant.

10. HERDC Income – Top Movers in Category 1 Income for Universities Who Do Not Have a Medical School



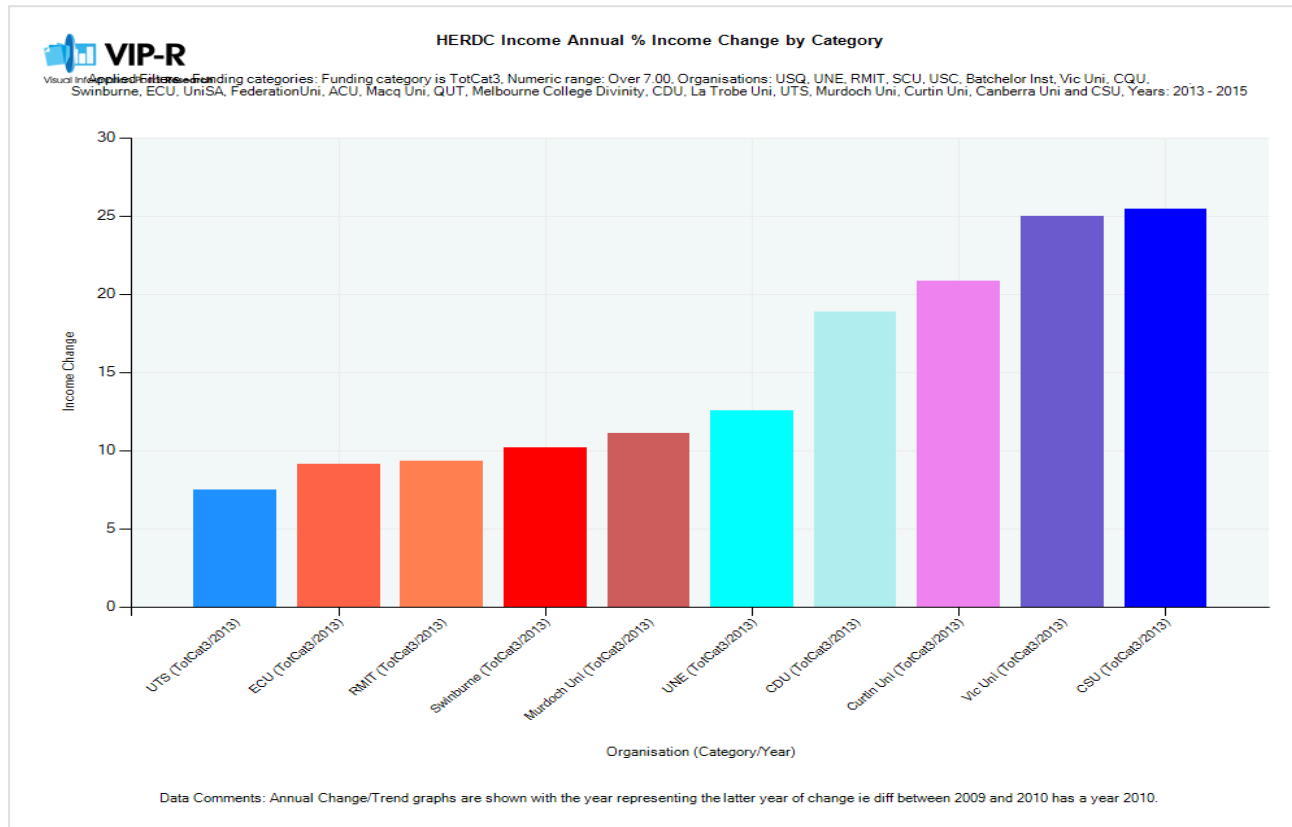
University	2011 % Chg	2012 % Chg	2013 % Chg	3 yr average Cat 1 Income (2011-2013)
Macq Uni	64.14	12.51	11.17	\$ 27,710,490
QUT	3.36	19.80	26.62	\$ 26,714,326
Swinburne	21.59	15.02	10.97	\$ 11,696,079
SCU	68.65	8.1	10.48	\$ 4,018,941
Canberra Uni	29.39	24.35	32.74	\$ 3,512,861
Vic Uni	53.02	-1.98	13.78	\$ 3,155,802
USC	-73.51	618.18	13.17	\$ 1,716,280
ACU	67.23	6.61	59.67	\$ 1,632,823
Federation Uni	38.58	-18.79	54.76	\$ 951,995
UNE	0.64	81.89	22.04	\$ 858,129

The separation of the top 'movers' in terms of increase in percentage of HERDC income received, of universities who do not have a medical school allows for another comparison of the HERDC data with like institutions.

This analysis shows the top 10 movers of universities without a medical school in Category 1 income showing the percentage change in 2013.

The table presents the top 10 universities with the largest percent change in income over the 3 year period, 2011 to 2013 for Category 1 with an additional column shown for the calculated 3 year average income over years 2011 to 2013.

11. HERDC Income – Top 10 Movers in Category 3 Income for Universities Who Do Not Have a Medical School



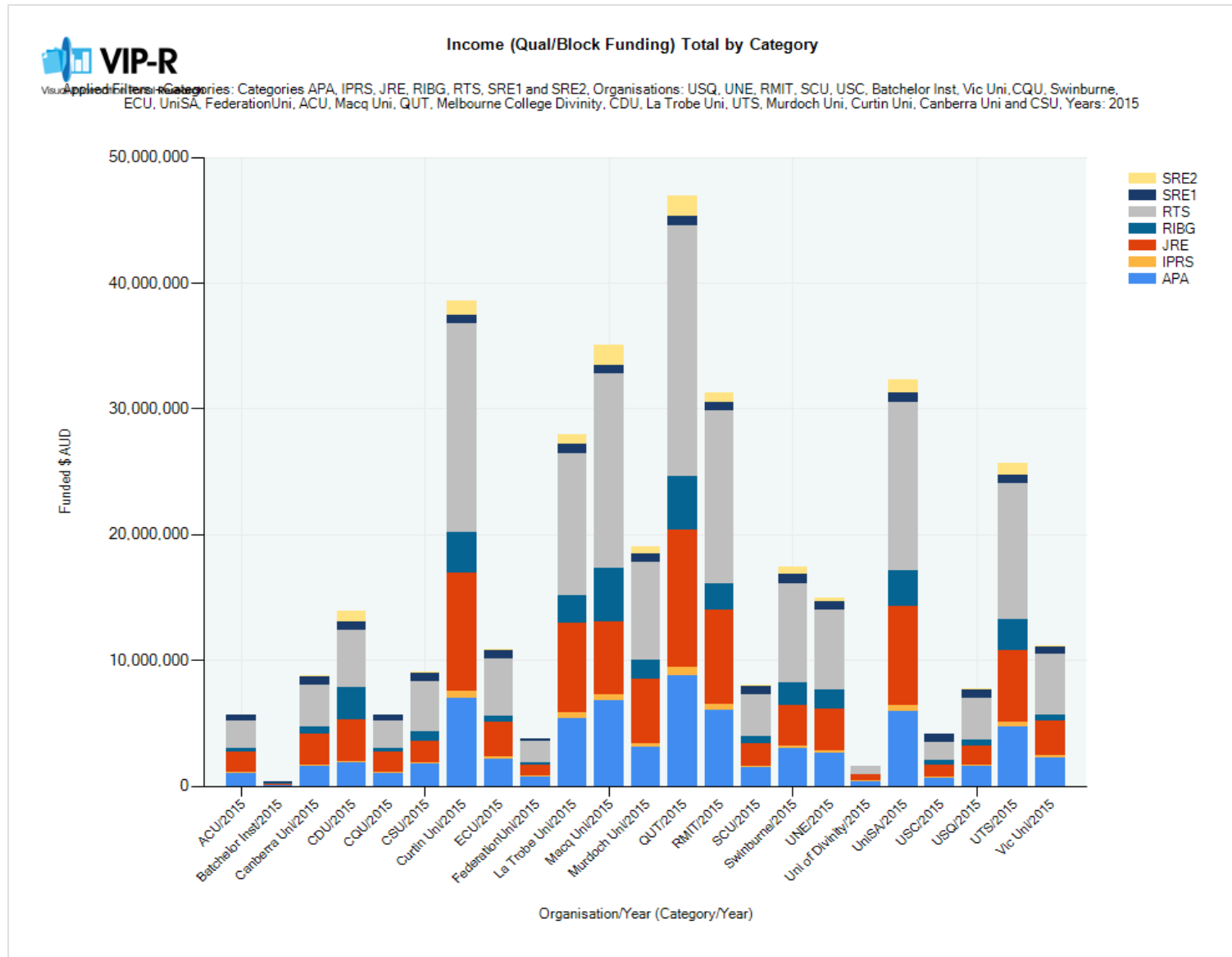
University	2011 % Chg	2012 % Chg	2013 % Chg	3 yr average Cat 3 Income (2011-2013)
Curtin Uni	21.46	36.84	20.81	\$ 17,710,802
UTS	7.33	54.90	7.45	\$ 11,457,639
Vic Uni	-20.98	49.23	24.98	\$ 6,294,956
UNE	-53.08	103.96	12.51	\$ 6,007,350
SCU	78.91	6.12	-17.17	\$ 4,797,834
CDU	15.32	41.93	18.88	\$ 4,249,632
USQ	42.60	-5.32	0.59	\$ 3,432,941
CSU	36.60	-0.79	25.46	\$ 2,888,498
CQU	-4.65	63.79	-6.85	\$ 2,661,285
USC	12.53	96.73	-11.13	\$ 1,406,693

The separation of the top 'movers' in terms of increase in percentage of HERDC income received, of universities who do not have a medical school allows for another comparison of the HERDC data with like institutions.

This analysis shows the top 10 movers of universities without a medical school in Category 3 income showing the percentage change in 2013.

The table presents the top 10 universities with the largest percent change in income over the 3 year period, 2011 to 2013 for Category 3 with an additional column shown for the calculated 3 year average income over years 2011 to 2013.

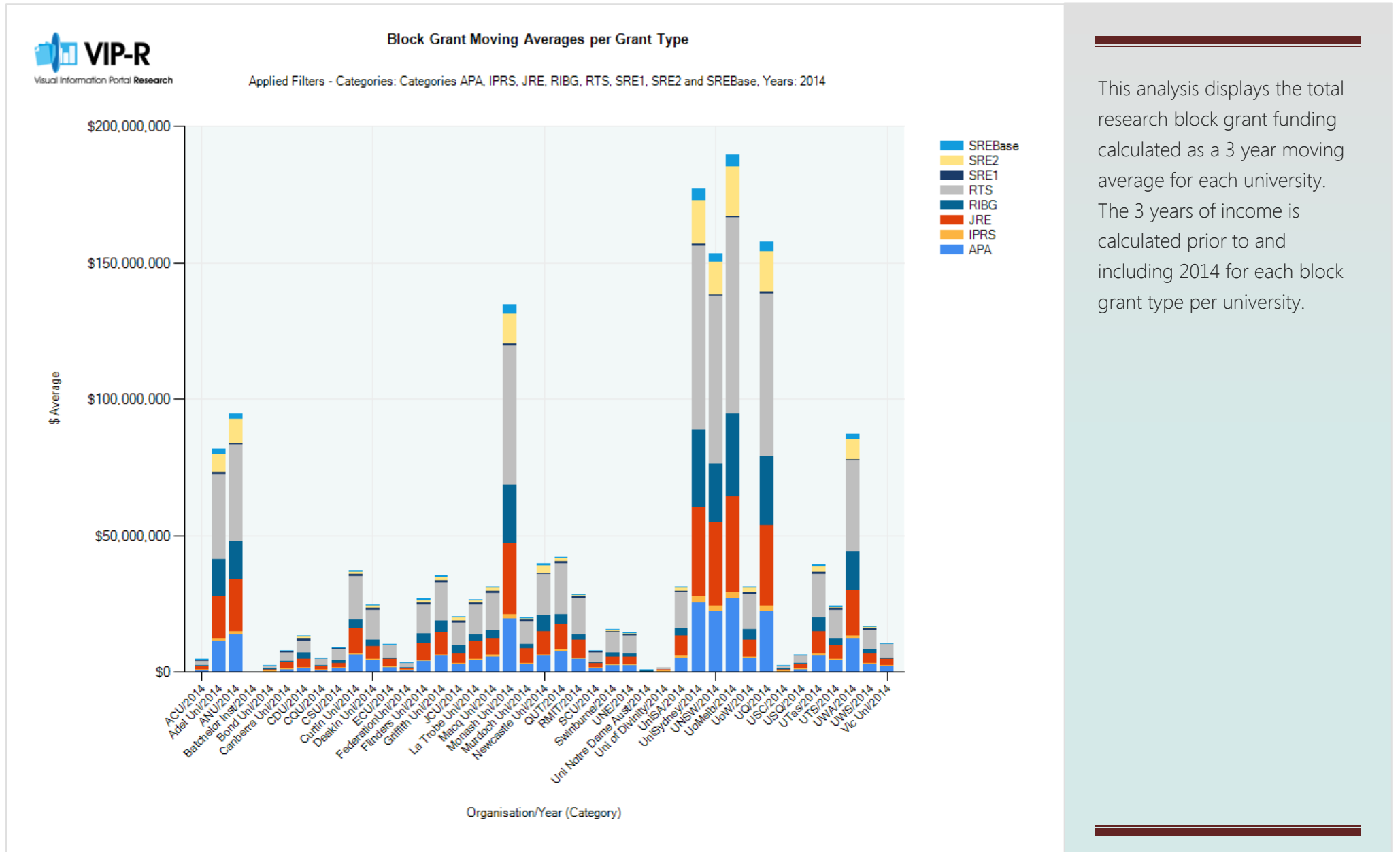
12. Block Grants Awarded – Total Allocated to Universities in 2015



To understand the total research block grant funds awarded each institution is receiving and the trend growth, analyses can be viewed displaying this data over the recent years for 2012 to 2015.

This analysis shows the data as a stacked bar chart for each university for the years 2012 to 2015. The data is ordered alphabetically by organisation name.

13. Block Grants – 3 Year Average 2012 to 2014 – Universities Over \$20 Million

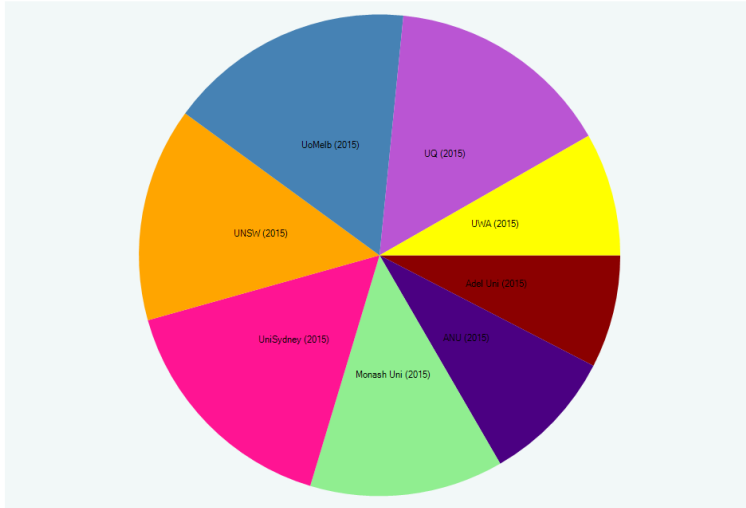


This analysis displays the total research block grant funding calculated as a 3 year moving average for each university. The 3 years of income is calculated prior to and including 2014 for each block grant type per university.

14. Block Grants – Percentage of Total Funds Allocated to University Groups in 2015 – Go8, ATN, RUN, IRU and ‘Others’



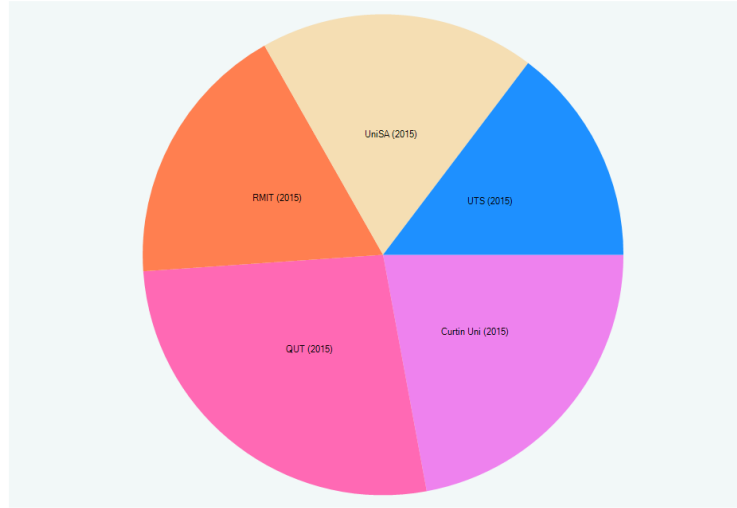
Income (Qual/Block Funding) Percentage of Total Funding
Applied Filters - Organisations: Aus Go8, Years: 2015



Data Comments: VIP-R Analysis Analysis shows percentage of total available funds of the organisation



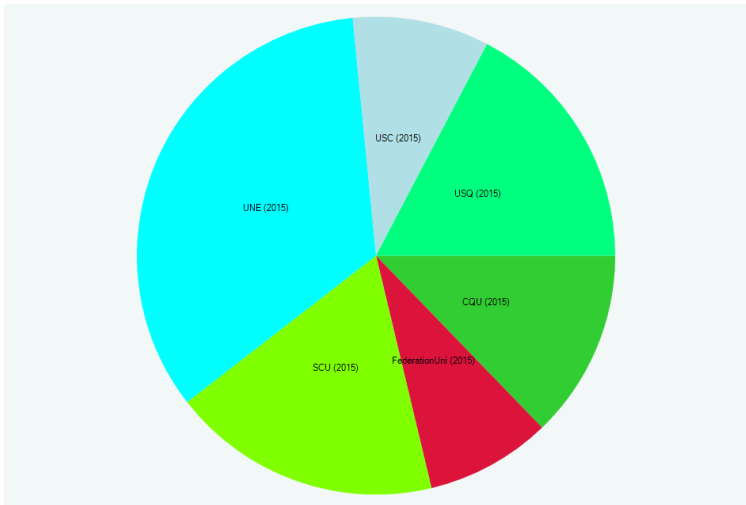
Income (Qual/Block Funding) Percentage of Total Funding
Applied Filters - Organisations: Aus ATN, Years: 2015



Data Comments: VIP-R Analysis Analysis shows percentage of total available funds of the organisation



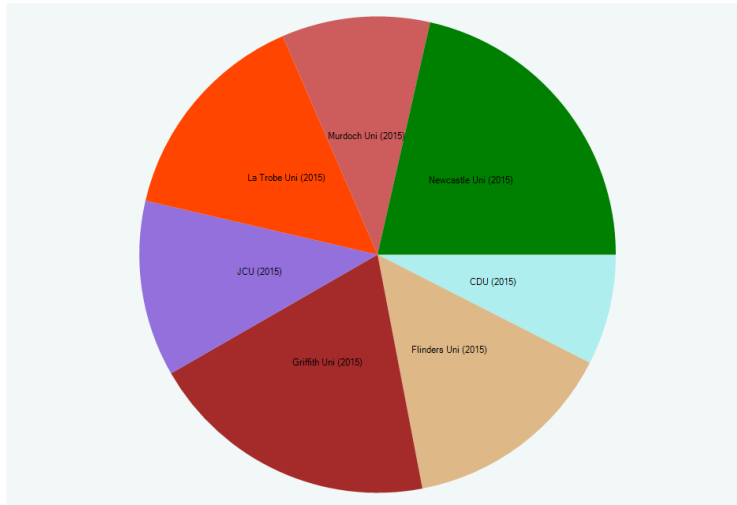
Income (Qual/Block Funding) Percentage of Total Funding
Applied Filters - Organisations: Aus RUN, Years: 2015



Data Comments: VIP-R Analysis Analysis shows percentage of total available funds of the organisation



Income (Qual/Block Funding) Percentage of Total Funding
Applied Filters - Organisations: Aus IRU, Years: 2015



Data Comments: VIP-R Analysis Analysis shows percentage of total available funds of the organisation

To understand those university groups who are receiving the large proportion of the total research block grant funds available, a breakdown of figures can be obtained per university group.

These pie charts display the proportion of funds allocated to each university per group – Go8, ATN, RUN, IRU and ‘Others’ – those universities not included in any of the other groups.

The table provides supporting figures for these pie charts including the total percentages for the whole group.

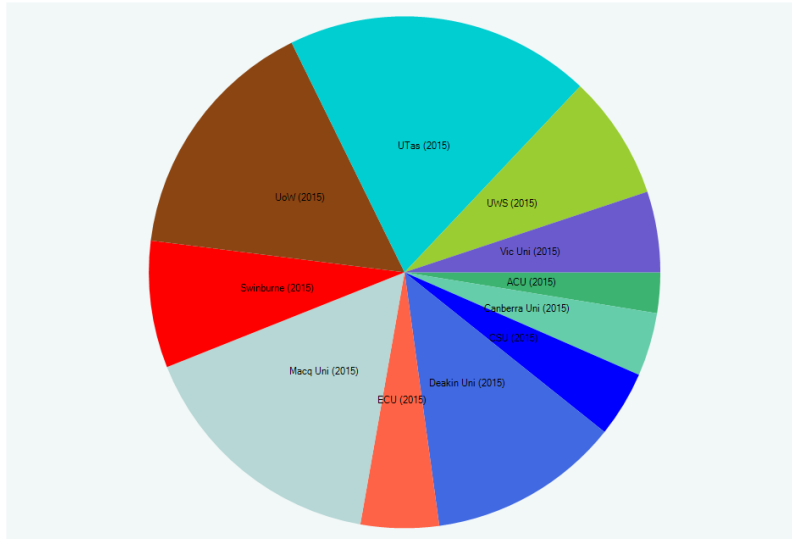


15. Block Grants – Percentage of Total Funds Allocated to University Groups in 2015 - Go8, ATN, RUN, IRU and 'Others' (cont.)



Income (Qual/Block Funding) Percentage of Total Funding

Visual Information Portal Applied Filters - Organisations: UoW, UWS, UTas, Vic Uni, Deakin Uni, Swinburne, ECU, Macq Uni, Canberra Uni and CSU. Years: 2015



Data Comments: VIP-R Analysis Analysis shows percentage of total available funds of the organisation

University Group	Total Percentage of Funds in 2015
Go8	63.90
ATN	10.05
RUN	2.54
IRU	10.84
OTHERS	12.55
TOTAL	99.88
** Excludes Bachelor Institute (.02%)	

The table provides supporting figures for the pie charts above for each university group. Included are individual university figures as well as the total percentages for the whole group.

HERDC/BLOCK FUNDING

DETAILED REPORT

The data shown in this supplied summary report is only a fraction of the data included in the detailed HERDC/Block Funding report.

The report analyses the data, visually providing information about the organisations that are growing and shrinking, their share of the funding available and what components of the funding are changing. The report also provides details as to where the client's organisation is positioned within the sector and the growth trends for your organisation and those that you have nominated to benchmark against.

In summary, the detailed HERDC/Block Funding Report provides:

- A customised view from your organisation's perspective
- The ability to select up to 7 organisations that you would like to use for comparisons of data through the analyses and tables included in the customised report
- A wide variety of charts/tables covering a variety of aspects of the HERDC/Block Funding including:
 - Detailed graphs of sector growth rates by HERDC income (categories 1 to 4) and publication categories (A1, B, C1 and E1) over the last 6 years
 - Fastest movers in each category over one and three year periods
 - Trends in HERDC/RBG by sector grouping
 - Profile of your individual institution against relevant sector grouping, total sector and state
 - Other HERDC/RBG trends as requested (up to a maximum number of requests) related to income, publications, HDR student numbers and completions.
- Can be designed with your university's colour scheme and logo.

VIP-R REPORTS

PRICING

A detailed HERDC/Block Funding report can be purchased for \$1800 excluding GST. Due to the high level of customisation the report can be delivered within 4 weeks of ordering.

CSV files containing the datasets used in the reports for the charts can also be ordered for an additional \$900 excluding GST.

** Please note that all VIP-Research subscribers have access to all charts and data within their normal subscription.

TO ORDER

Please email us at info@vip-research.com.au and a member of the VIP-Research team will be in contact to discuss your specific requirements.

VIP-RESEARCH INFORMATION REPORTS & SYSTEM

VIP-Research Pty Ltd provides a variety of reports released at key points throughout the year to assist organisations with their management decisions. Each report is:

- **customized** to focus on the client's own organisation and organisations with similar characteristics
- **highlights entities that are growing** and those that are not based on the primary focus of the report
- **shows trends** within the sector, within different sized organisations both nationally and internationally

In addition to the HERDC/Block Funding report described above, some of the other report styles and focus include:

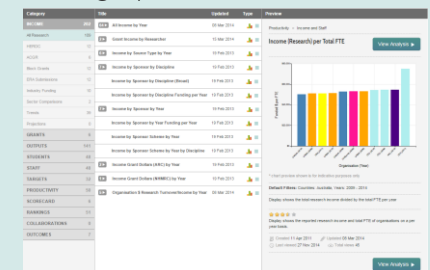
Alignment Report – Analyzes an organisation's alignment with their stated internal goals and foci, with its external/international comparators and with industry growth and focus based on discipline area.

Discipline Growth Report – highlights which discipline areas are growing both nationally and internationally and which ones are shrinking. The report focuses on the areas that the client has expertise in as well as matching to where its more recent focus has been.

VIP-R SYSTEM

SUMMARY

The VIP Research Cloud System is a subscription based, visual analytics tool that enables organizations to compare their research performance both externally and internally using various criteria including; research income, research outputs, financials and postgraduate candidature as well as student/staffing demographics.



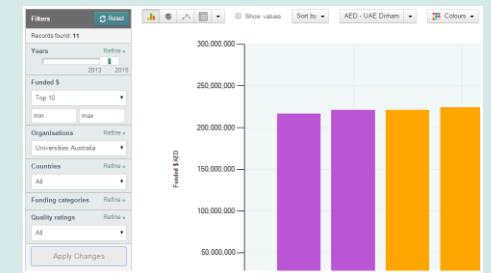
The system provides a flexible data visualization tool that allows an organization to securely share selected data online with benchmark partners or perform local analysis on a variety of hardware as well as tablets including Apple's iPads and Samsung's Note.

University Profile Report – This is VIP-Research’s most comprehensive report that looks in detail at an organisation in terms of its capacity for growth, its current research activity. Its research intensity and whether that is likely to be expanded, its focus on quality and its alignment (as per alignment report description). The report should assist the university in terms of strategy and planning by providing an external, objective perspective of its performance over the last 5 years and the likelihood of improvement as well as looking at where those areas could be.

ARC Funding Report – Apart from charting all of the key data elements, the report shows the trends over recent years including institutions with sustained improving/declining ARC profiles.

League Table Report – Looks at a variety of the League Tables from around the world and compares where your institution sits as well as looking at other global universities in proximity to your institution’s ranking.

Using uploaded data about organizations from across the world, you can use the VIP Research System to contrast your institution’s performance and, by means of the VIP visual presentation interface, identify strengths and any areas that could benefit from improvement.



Extensive filters and graphical options available to modify the way you look at your data.

FULL VIPR ACCESS

Pricing starts at \$20K for 5 users with 12 month access to domestic and international data and all of the system analyses.

VIP-RESEARCH INFORMATION

DATA SOURCES

The number of individual data sources is large and is constantly growing. An indication of the breadth of data sources applicable to the VIP-R system is provided in the table below. Some of the sources whose data is reviewed, utilised and/or analysed include:

Source	Specifics
National government sources	Australia, Canada, China, Denmark, India, Ireland, UK, USA.
State/Provincial government sources	State/provincial governments from Australia, Canada, UK, and USA.
Local government sources	Australia and UK local government grants.
Government controlled granting bodies	Australia (ARC, NHMRC, Rurals), NZ (FRST, MRC), UK (Research Councils, Lottery Fund, JISC, NSF, NIH).
Granting bodies	Royal Society, Ian Potter fund, Various state & national cancer councils, Bill Gates Foundation, Nuffield Foundation.
Industry funders of research	BHP, RIO, Leverhulme, Potter Foundation, Wellcome Trust, Hewlett-Packard.
Universities	Over 1200 universities including annual and research reports. All Australian, NZ, UK and USA universities and a number from other countries.
Hospitals	Over 400 hospitals including annual and research reports.
Research Centres/Institutes	Over 150 research institutes including annual and research reports.
Libraries	Various library sources across the world.
Research data providers	Various research data and ranking resources including OECD, Jiao Tong, METU
Associations	Reports from Universities Australia.
"Other" funders	Other global funding agencies

VIP-R

Data and Analyses

Are structured to answer key questions such as:

- Where is my organisation positioned relative to others nationally or internationally?
- What are my organisations strengths and weaknesses?
- Are other entities growing in specific areas of research and if so, what are they?
- Have there been changes in my income/outputs/growth since implementing specific policies?
- What proportion of monies available in this area does my organisation currently have and is it growing?

VIP-RESEARCH

SUMMARY OF PURCHASE OPTIONS

SERVICE	DESCRIPTION	PRICING (excl GST)
VIP-R System 12 month Subscription	Access to the cloud based analytical system with access to domestic and international research data and all of the system analyses. Option available to upload your own internal data and create your own analyses using either system and/or your internal data.	Starts at \$20,000 for 5 users
VIP-R Focussed Reports	As described in the section in this document 'Reports and System'. Includes specific styles of reports such as Alignment, Discipline Growth, University Profile, Government Funding and League Tables/Ranking reports.	Starts at \$1800
CSV formatted data tables	Suitable for organisations who are not subscribers to the VIP-R system but would like certain areas of data made available to them from the VIP-R datasets.	Starts at \$900. Available for purchase only with a VIP-R Report
Detailed Customised Reports	Reports in the style of the packet reports or totally customised to specifically requested foci for your organisation and can include your own internal data as well as VIP-R datasets.	Available on request

VIP-R

Data and Analyses are structured to answer key questions such as:

- Where is my organisation positioned relative to others nationally or internationally?
- What are my organisations strengths and weaknesses?
- Are other entities growing in specific areas of research and if so, what are they?
- Have there been changes in my income/outputs/growth since implementing specific policies?
- What proportion of monies available in this area does my organisation currently have and is it growing?

TO ORDER

Please email us at info@vip-research.com.au and a member of the VIP-Research team will be in contact to discuss your specific requirements.

